

System Integration



Analyzer Package System

As a recognized market leader in the analyzer service field, ANT Engineering Plus has experienced virtually every type of process analyzer system. Our engineers have gained knowledge in design and manufacturing of pre-fabricated analyzer packages through decades of hands-on experience with the systems. Our range covers from the rack mounted analyzers to the large package with the HVAC shelter for multiple analyses.

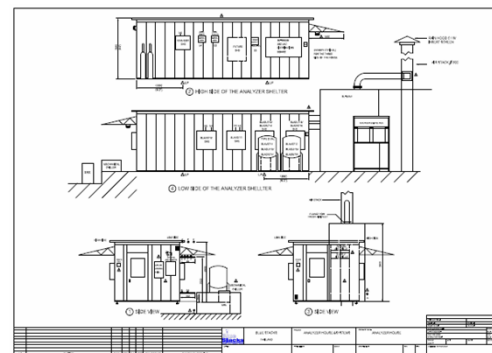
Our scope is the following :

- ☐ Complete system design and consultation
- ☐ Independent procurement body
- ☐ Customized sampling system and housing
- ☐ Engineering, assembly, and construction
- ☐ Integration of instrumentation and analyzer systems
- ☐ Complete systems testing – FAT/SAT
- ☐ Installation, commissioning, and training
- ☐ Start-up-related-works
- ☐ Spare parts and after-sales-service
- ☐ Warranty and extended warranty



Systems that we integrate :

- ☐ On-line Process Analyzer Package System
- ☐ Sampling & Handling System
- ☐ Continuous Emissions Monitoring Systems (CEM)
- ☐ Steam & Water Analyzer System (SWAS)
- ☐ Gas-Liquid Recovery System
- ☐ SCADA & PLC System



System Integration



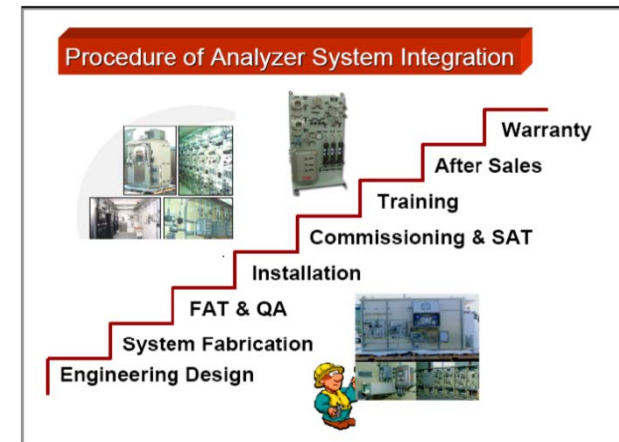
Analyzer Package System

Our Features:

- ☐ Single source system responsibility.
- ☐ Know-how and experience over 15 years in handling analyzer systems
- ☐ Pre-fabricated design ready for installation
- ☐ Process Data is verified against analyzer system capabilities
- ☐ Compliance to local / authority standard(s)
- ☐ Closely integrated with other systems
- ☐ Customized housing fit for purpose
- ☐ Fast, trouble-free installation, start-up and commissioning
- ☐ Support for site activities
- ☐ Consultancy services for modification of analyzer systems at site

Customer Benefits :

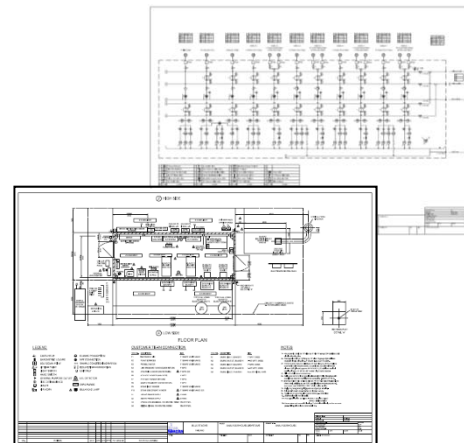
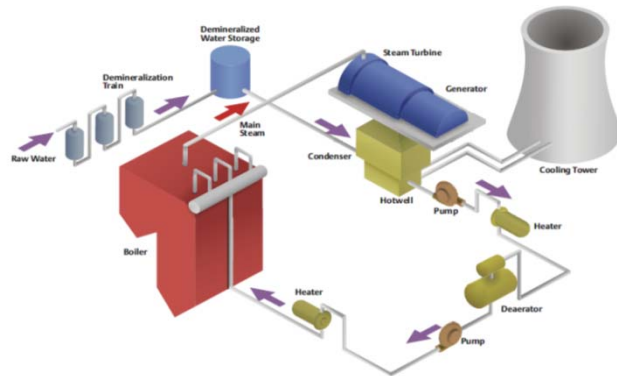
- ☐ Low price due to lower cost structure
- ☐ Local system integrator : strong support team always available
- ☐ Minimize lead time
- ☐ Easy cooperation between customer's team and our team
- ☐ Extra warranty period available as standard and option
- ☐ No language barrier
- ☐ Reduce training time
- ☐ Excellent post-sale service & maintenance quality



System Integration

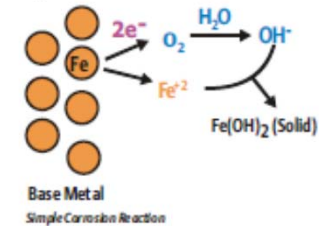


Steam & Water Analyzer System



Corrosion is the enemy.

With water ever-present, corrosion is the enemy that threatens every metal surface in a power plant. Keeping water chemistry in balance is the only way to keep corrosion in check, thus ensuring the integrity of the process throughout the plant.



In a typical power plant, water and steam are in constant contact with metal surfaces, and corrosion is ever-present.

The working fluid - water - threatens the integrity of the plant equipment: condensers, heaters, pumps, piping, boilers and turbines.

A major goal of plant chemical control is preventing solids buildup and corrosion in the plant.

System Integration



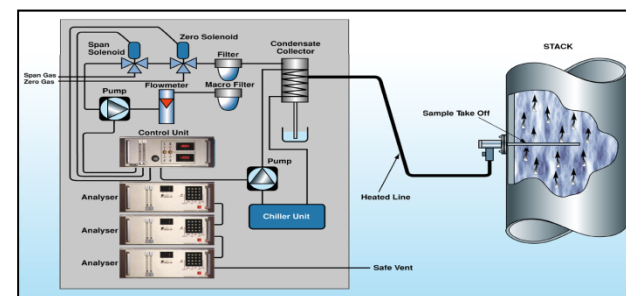
CEM System



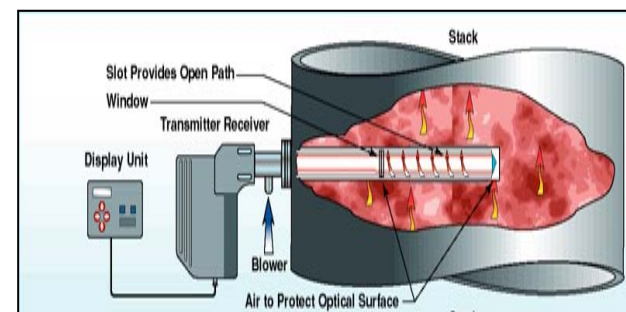
SICK
Sensor Intelligence.



Extractive System



In-Situ System



ANT
ENGINEERING
PLUS Co., Ltd.

System Integration



Our Partner

- ❑ CAE is our partner and an ISO 9001 certified Analyzer System Integrator (ASI) established in Singapore
- ❑ CAE track records and capabilities compliment BlueStacks and make our offer to the customer full-ranged and cost effective
- ❑ With world-class system and effective local support, our customers are ensured of the full-functional and smooth-operation systems

