

# System Integration



## Analyzer Package System

**As a recognized market leader in the analyzer service field**, Blue Stacks has experienced virtually every type of process analyzer system. Our engineers have gained knowledge in design and manufacturing of pre-fabricated analyzer packages through decades of hands-on experience with the systems. Our range covers from the rack mounted analyzers to the large package with the HVAC shelter for multiple analyses.

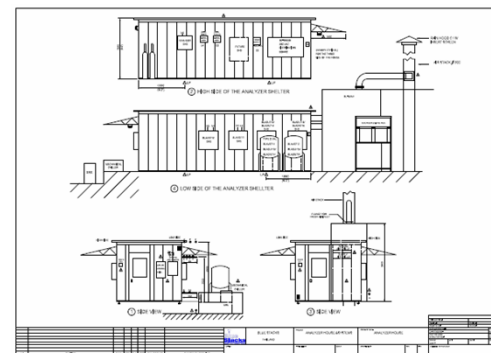
### Our scope is the following :

- Complete system design and consultation
- Independent procurement body
- Customized sampling system and housing
- Engineering, assembly, and construction
- Integration of instrumentation and analyzer systems
- Complete systems testing – FAT/SAT
- Installation, commissioning, and training
- Start-up-related-works
- Spare parts and after-sales-service
- Warranty and extended warranty

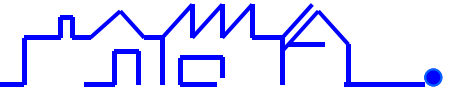


### Systems that we integrate :

- On-line Process Analyzer Package System
- Sampling & Handling System
- Continuous Emissions Monitoring Systems (CEM)
- Steam & Water Analyzer System (SWAS)
- Gas-Liquid Recovery System
- SCADA & PLC System



# System Integration



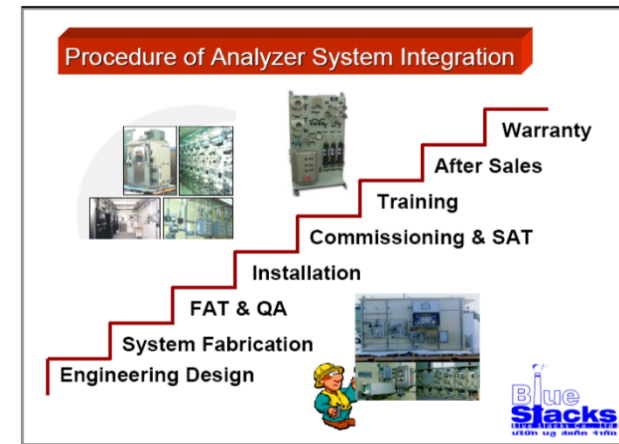
## Analyzer Package System

### Our Features:

- Single source system responsibility.
- Know-how and experience over 15 years in handling analyzer systems
- Pre-fabricated design ready for installation
- Process Data is verified against analyzer system capabilities
- Compliance to local / authority standard(s)
- Closely integrated with other systems
- Customized housing fit for purpose
- Fast, trouble-free installation, start-up and commissioning
- Support for site activities
- Consultancy services for modification of analyzer systems at site

### Customer Benefits :

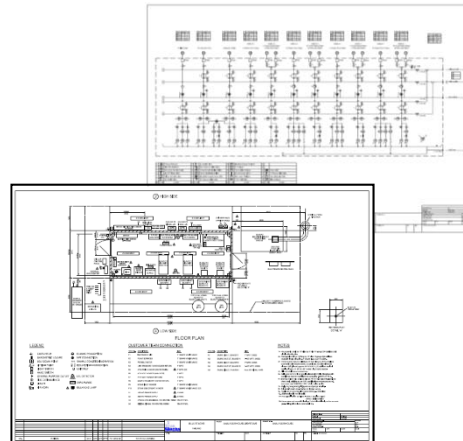
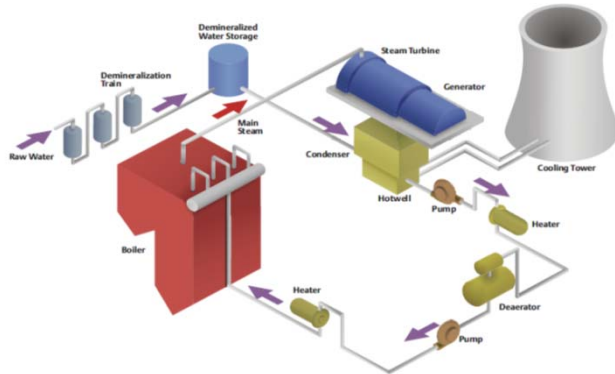
- Low price due to lower cost structure
- Local system integrator : strong support team always available
- Minimize lead time
- Easy cooperation between customer's team and our team
- Extra warranty period available as standard and option
- No language barrier
- Reduce training time
- Excellent post-sale service & maintenance quality



# System Integration

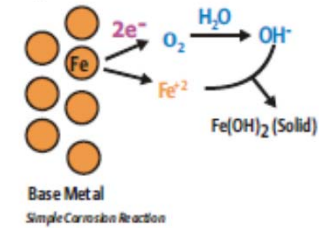


## Steam & Water Analyzer System



## Corrosion is the enemy.

With water ever-present, corrosion is the enemy that threatens every metal surface in a power plant. Keeping water chemistry in balance is the only way to keep corrosion in check, thus ensuring the integrity of the process throughout the plant.



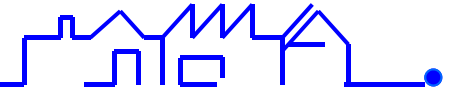
In a typical power plant, water and steam are in constant contact with metal surfaces, and corrosion is ever-present.

The working fluid - water - threatens the integrity of the plant equipment: condensers, heaters, pumps, piping, boilers and turbines.

A major goal of plant chemical control is preventing solids buildup and corrosion in the plant.



# System Integration



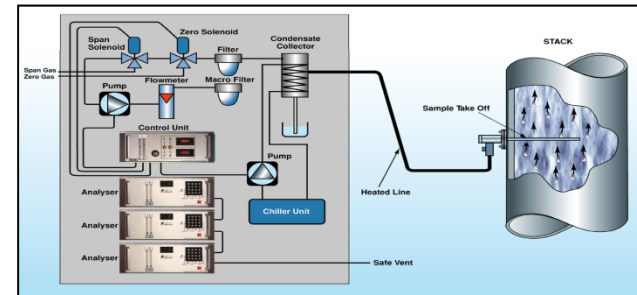
## CEM System



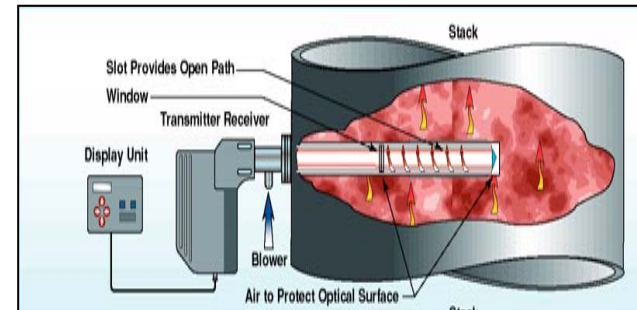
**SICK**  
Sensor Intelligence.



## Extractive System



## In-Situ System



**Blue Stacks**  
Blue Stacks Com Ltd  
ឃ្លាត ឃ្លាត ឃ្លាត ឃ្លាត

# System Integration



## Our Partner

- ❑ CAE is our partner and an ISO 9001 certified Analyzer System Integrator (ASI) established in Singapore
- ❑ CAE track records and capabilities compliment BlueStacks and make our offer to the customer full-ranged and cost effective
- ❑ With world-class system and effective local support, our customers are ensured of the full-functional and smooth-operation systems

